

Questionnaire

for the planning of
Radiometric Mould Level Measurement

For an optimal solution for your measuring task, we kindly ask you to return this questionnaire filled out completely together with the drawings requested.

Contact Information			
Company			
Contact Name			
Street / P.O. Box			
Postal Code / City			
Country / State			
Phone No.		Fax No.	
E-mail			

Caster Specifications			
Number of strands:			
Electromagnetic brake:	<input type="radio"/> Yes <input type="radio"/> No	Field intensity at detector position _____	Gauss
		Make _____	
Electromagnetic stirrer:	<input type="radio"/> Yes <input type="radio"/> No	Field intensity at detector position _____	Gauss
		Field frequency _____	Hz
		Make _____	

If applicable, please state own detector preference:

☐ LB 6739 ☐ LB 6760 ☐ LB 6752

Please indicate cable routing distance from junction box to detector:

☐ 5 m ☐ 10 m ☐ 15 m ☐ 20 m

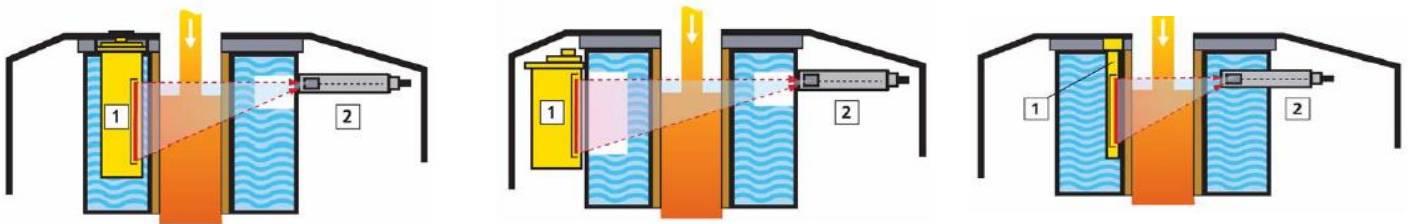
Please indicate connection type to junction box:

☐ Industrial connector ☐ Open ends/terminals

Please fill out the table below for material between then source and the detector beam path for all different mould formats considered.

	Format 1	Format 2	Format 3	Format 4
Mould section size (mm)				
Casting procedure (open/closed)				
Material thickness in total (mm)				
Copper walls				
Steel walls				
Water box				
Molten steel				
Distance source - detector (mm)				
Requested measuring range (mm) (from top of copper)				
Meniscus / Set-point (mm) (from top of copper)				

Please indicate source (1) and detector (2) arrangement possible:



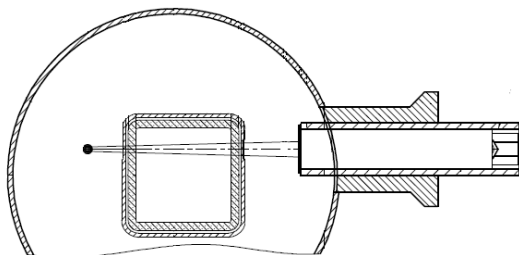
☐ Internal

☐ External

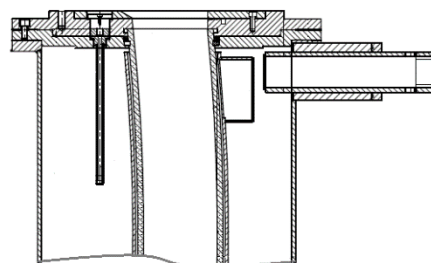
☐ In a protection tube

Please also provide the following information when submitting this form filled out:

- 1) Dimensional drawing, for all considered mould formats, showing the mould from above.
- 2) Dimensional sectional drawing, for all considered mould formats, of the mould from the side.



Drawing example for
mould from above.



Drawing example for
mould from the side.