

Conveyor Weigher Shield LB8700 / LB8702

**Closure Instruction
30846CI2**

Rev. No.: 00, 12/2019

NOTE



This document is a supplement to the operating manual conveyor weigher shield / LB 472.

- ▶ Please observe the information and specifications in the operating manual.

⚠ WARNING



Danger of injury by falling loads!



- ▶ Assemble and disassemble the shield with a crane if necessary.
- ▶ Never stand underneath a lifted or suspended load, keep at a safe distance.
- ▶ Exclusively use the provided fixing possibilities (lifting brackets) for attaching the sling gear.
- ▶ Wear head protection and safety shoes.
- ▶ Cordon off the danger zone with barrier tape.

⚠ CAUTION



Danger of injury caused by heavy and bulky system components!



- ▶ Heavy and bulky system components should only be handled using aids and by at least 2 persons.
- ▶ Observe the guidelines for safe handling of heavy loads.
- ▶ Ensure stability and use the provided fixing possibilities.

⚠ CAUTION



Danger caused by ionising radiation!

Shields usually contain radioactive sources. An increased exposure to radiation may lead to damage to health.

- ▶ Consult the radiation safety officer responsible for your company.
- ▶ Ensure that no persons are in the field of radiation during the work.

IMPORTANT

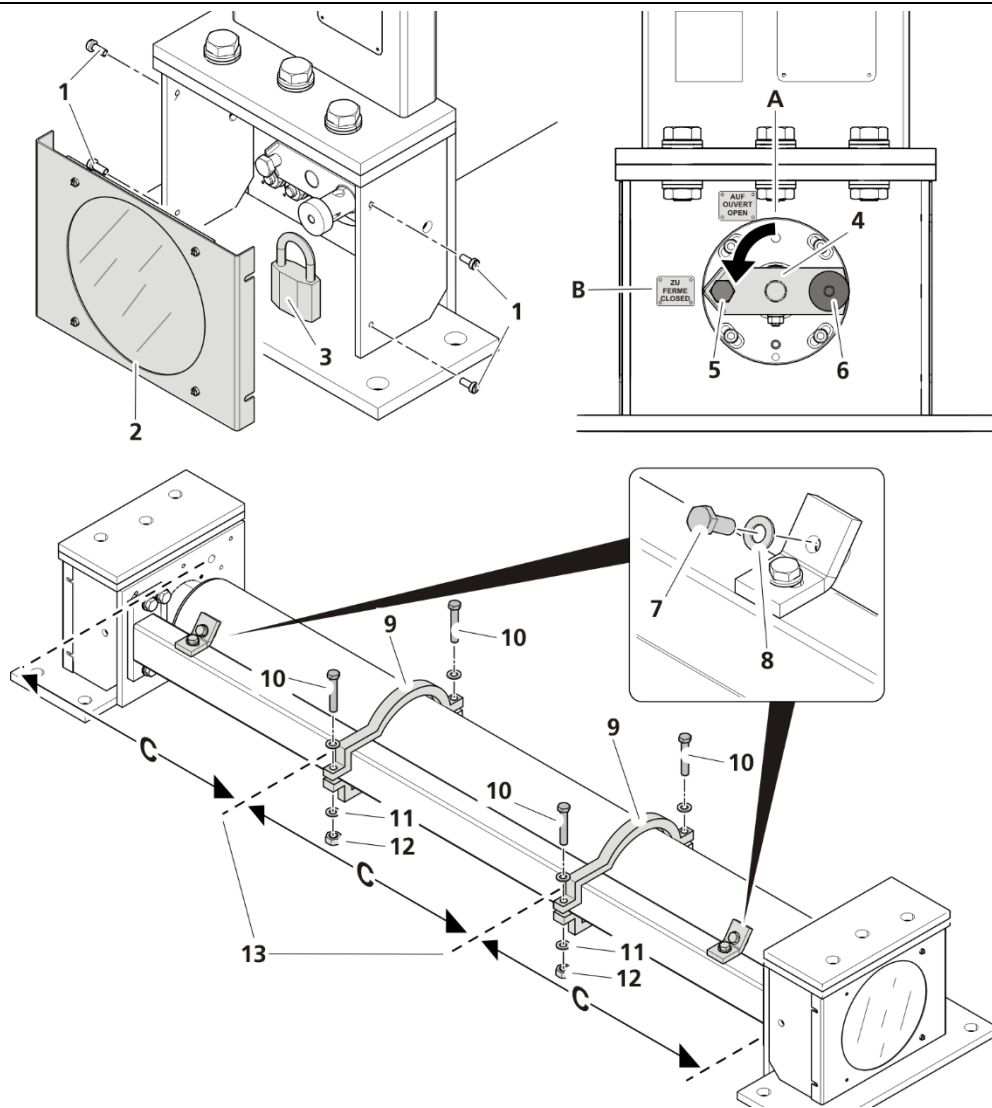


The applicable national regulations of the country of use have to be observed.

IMPORTANT



Removal and installation of sources may only be operated by persons who are at least employees with general knowledge and were instructed by an expert or authorized person (refer to the operating manual of the transport shield). If the shield includes a radioactive source, the responsible radiation safety officer must be consulted.



- | | |
|----------------------------------|---|
| 1 Screws | 9 Transport protection brackets |
| 2 Cover | 10 Hex screw M8 |
| 3 Padlock | 11 Washer M8 |
| 4 Locking lever | 12 Nut M8 |
| 5 Safety hex socket screw | 13 Position transport protection brackets |
| 6 Locking bolt | A Position "OPEN" |
| 7 Transport lock hex screw M8x20 | B Position "CLOSED" |
| 8 Washer M8 | C Distance |

Close radiation beam outlet and mount transport brackets

- Loosen screws (item 1) and remove the cover (item 2).
- If applicable, remove the padlock (item 3) and the safety hex socket screw (item 5).
- Pull the locking bolt (item 6) and turn the locking lever (item 4) to the "CLOSED" (item B) position.
- Lock the locking bolt (item 6) into place in the new position.
 - ▶ The radiation beam outlet channel is now closed.
- Attach the padlock (item 3).
- Mount and screw the cover (item 2).
- Mount the transport lock with washers (item 8) and screws M8x20 (item 7).
- Attach the protection brackets (item 9) at the same distance (item 13 and item C).
 - ▶ For example: shield length 1800 mm, distance (C) = 600 mm.

9. Tighten the hex screws (item 10) with washers (item M11) and nuts (item M12) with a tightening torque of 17 Nm.
- ▶ The shield is closed and secured correctly.

IMPORTANT



- ▶ Further preparation for shipment in compliance with national / international regulations for the transport of radioactive material.
- ▶ Observe the requirements for the return to BERTHOLD TECHNOLOGIES GmbH & Co. KG in the operating manual of the transport shield.
- ▶ The shield must be technically in perfect condition. Contact BERTHOLD TECHNOLOGIES GmbH & Co. KG if this does not apply.

We reserve the right to further developments and technical modifications of our products.